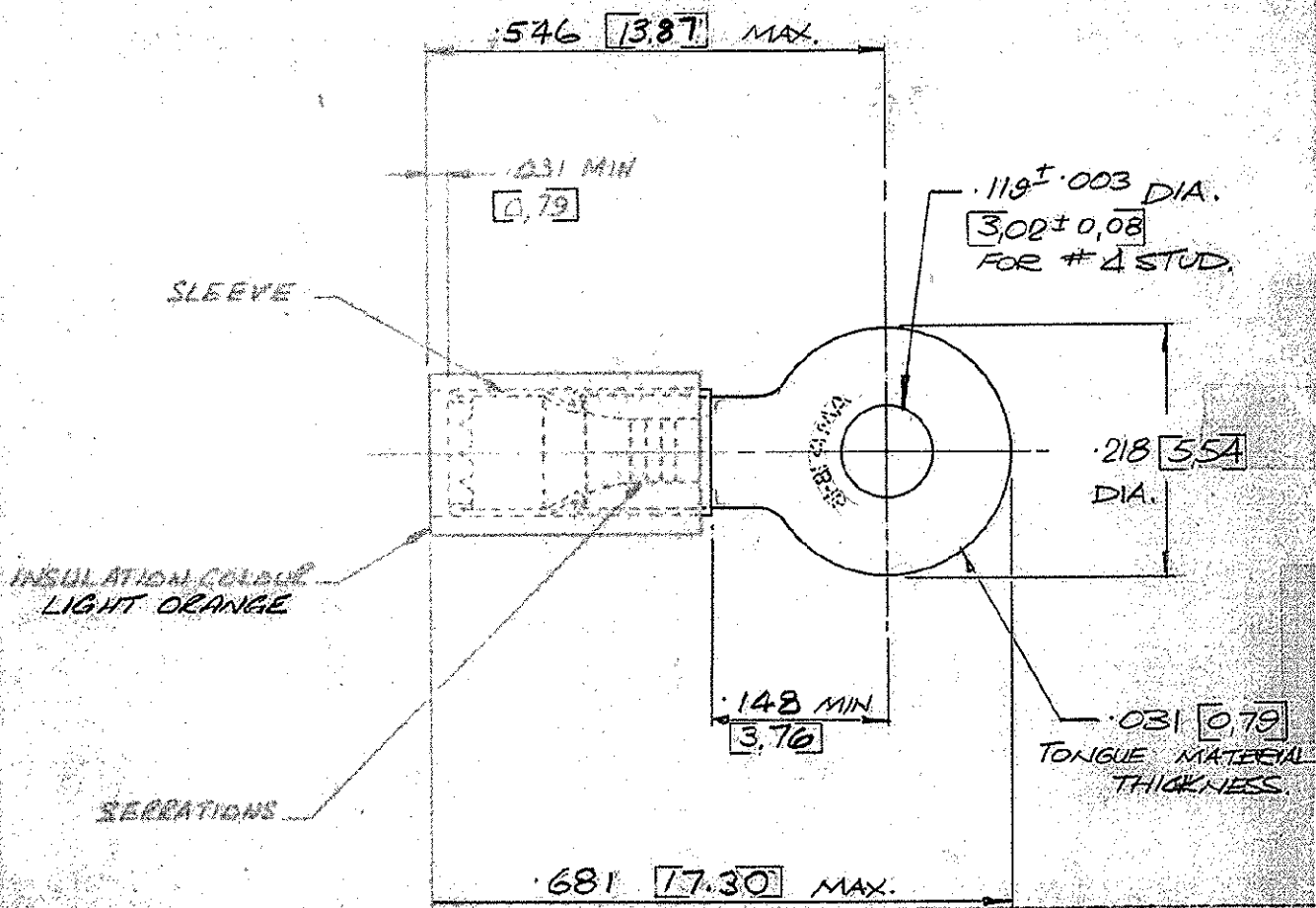


C-153103

1st ANGLE (AMERICAN) PROJECTION

DIMENSIONS IN INCHES. DO NOT SCALE PRINT
DIMENSIONS THUS [] IN MM.



**ENGINEERING
OFFICE
MASTER**

ORIGINAL PART
NO 50834.
REFERENCE
ONLY

FOR .055-105 [1.4-2.67] WIRE MS. DIA

REV	DESCRIPTION	BY	CHK	DATE
E	ES 00-0469-93			9/6/92
D	.148 DIM. REPOSITIONED	DR		19/1/77
C	.657, .575, .156, .055/115	DR		2/5/77
B	PICTORIAL CHANGE ONLY	AVVC		3-4-73
A	LIGHT ORANGE WAS ORANGE	DL		28 9/72
UTR	REVISION RECORD	DR	CHK	DATE

© AMP of GREAT BRITAIN LTD 1977

CUSTOMER COPY REFERENCE ONLY

MATERIAL AND FINISH: COPPER, ANNEALED

INSULATION: TEFLON WIRE - SLEEVE INSULATION 18-10

CLASS: RING TONGUE

TYPE: P.I.D.D. STRAIGHTEN

TERMINAL HOUS. STANDARD: MOODY

SCALE: N.T.S.

LOC: E

NO: A

C-153103

DATE: 26/10/77

DR: R.J. WAGUIRE

CHK: [Signature]